

Description

The GTM PRO 2 now offers even more possibilities for capturing data related to billing and maintenance operations. In addition to operating hours, you can monitor a wide range of digital and analog inputs and incorporate additional sensors as needed. Thanks to LTE data connectivity with a fallback solution and comprehensive GNSS location services using our external and robust combination antenna, you can quickly and securely integrate the product within the interior of your machine, ensuring a reliable connection at all times.

The GTM PRO 2 is optimized for use in work platforms with an operating voltage of 48 V DC. Digital inputs can be directly utilized, while analog inputs are usable within the range of 0-30 V for this application. Voltage recording of the charging voltage is currently omitted. The display operates as usual on our Telematik360 portal, supplemented with map information, analyses, email notifications and much more. This not only allows you to provide your customers with greater transparency for rental and billing but also helps optimize your machinery fleet, including device utilization rates.

Notice: An additional small DC/DC converter is required for mounting, we are happy to offer this.



Fig. 1: GTM PRO 2 for installation in your machines

Features

- LTE data transmission with GSM fallback for optimal connectivity
- Easy mounting
- External robust LTE and GNSS combination antenna
- CAN J1939 ready
- Bluetooth 4.0 LE ready
- All information presented in a clear manner on our Telematics360 portal
- Data transmission for RentNAV, AFD, Excel®, Google Earth®, XML, and many more

Advantages

- Usable with 48 V DC machine networks
- Real-time monitoring of usage durations, operational hours, and sensors
- Integrated battery for machine monitoring
- 5 inputs and 3 outputs
- Integrated battery for machine monitoring
- Flexible range of application, including
 - Work platform rentals
 - Crane rentals

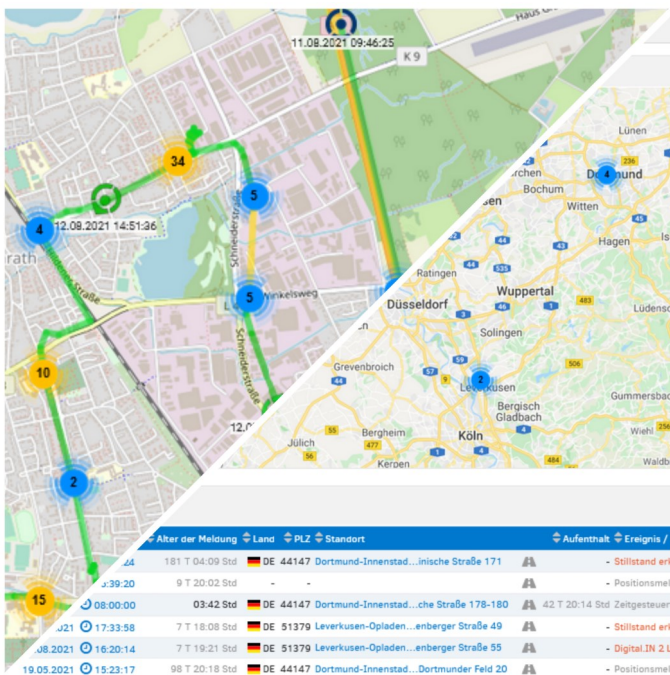


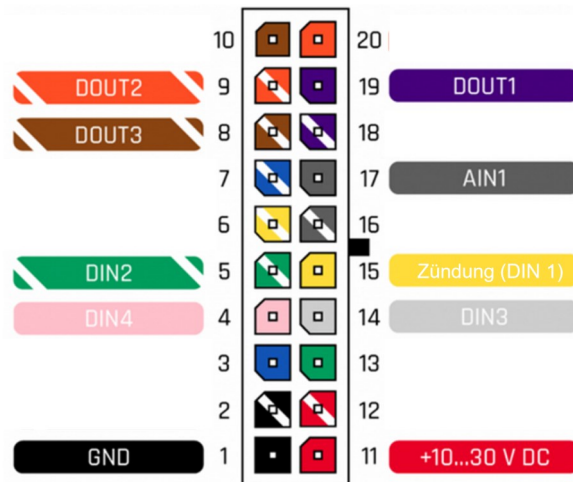


Fig. 2: Lane tracking and overview map in Telematik360

Electrical data	
Supply Voltage	10 - 30 V DC - usable on 48 V machines with DC/DC Converter
Current consumption	Operating mode at 12 V DC: Ø 45 mA and at 24 >V DC: Ø 24 mA
Battery	Integrated battery. Rechargeable via the vehicle power supply
Motion sensor	Integrated 3-axis accelerometer
Temperature monitoring	Integrated temperature and humidity sensor
Data transmission	LTE Cat1, GSM
Positioning	GNSS Receiver (GPS, Galileo, GLONASS, BeiDou, QZSS, AGPS)
Antennas	Waterproof LTE/GSM/GNSS combination antenna
Inputs/Outputs	1 Analog input - up to 30 V DC 4 Digital inputs - up to 70 V DC 3 Digital outputs
Interfaces	1 One-Wire, 2 CANbus J1939, Bluetooth 4.0 LE
Electrical connections	
Device connector	20-pin with coding; cable length 1 m, cable cross-sections 0.5 sqmm, colored individual wires
Environmental conditions	
Operating temperature	-40 °C to +85 °C, in battery mode -20 °C to +60 °C
Mechanical Data	
Housing	104 x 77 x 31,5 mm
Weight	197 g
IP class	IP41
Certification	
 E-Mark for operation motored vehicles  Declaration of conformity	

Mounting information



Pin assignment and color coding of the GTM Pro 2

The supply voltage (+10 to 30 V DC) is connected to continuous positive via pin 11 (+10...30 V DC) of the system connector, using a 2.5 A fuse (not included in the scope of delivery). The vehicle ground is connected via pin 1 (GND) of the system connector. The ignition is connected via pin 15 (ignition DIN1), pins 4,5,14 and 17 (DIN 4, 2, 3 and AIN 1) can be connected to the machine for evaluation of any signals. The digital outputs are connected to ground. Use the supplied industrial Velcro tape to mount the GTM PRO 2 and make sure the surface is clean. The LTE antenna connector must be connected using the RP-SMA > SMA antenna adapter supplied.

Notice: The power supply must be operated with +10 to 30 V DC. If your machine operates with a different power supply voltage, an appropriate DC/DC converter is required. The digital inputs of the GTM PRO 2 may be powered with up to 70 V DC.

Warranty

The manufacturer provides a warranty of 12 months from the date of shipment against manufacturing and material defects when the product is used correctly. The manufacturer reserves the right to either repair or replace the product without extending the original warranty period. The warranty becomes void if the product is misused, damaged, unauthorizely opened, repaired or altered.

Recycling instructions



This marking on the product, accessories or documentation indicates that the product must not be disposed of in household waste.

Electrical devices contain valuable resources and pollutants. Every consumer is therefore required by law to dispose of old electrical equipment at an approved collection or return point, for example at the local recycling center. Electrical waste is accepted free of charge and recycled in an environmentally friendly and resource-conserving manner.

Contact Information for COGNID

If you have any questions about our products or services, please don't hesitate to get in touch with us.

Sales

If you need advice or a personalized offer, you can schedule an on-site appointment with our sales team. We are happy to come to you.

vertrieb@cognid.de



Personal contact

If you're looking for a knowledgeable point of contact or the relevant staff member for your specific inquiry within our company, our team is eager to assist you!

+49 231 444704-0

info@cognid.de