

Description

Are you capturing operational data from your machines? GloboTrack Machine LITE (GTM LITE) presents a compact and professional solution for real-time analysis of position and sensor data from your machinery and equipment. This device is exceptionally suitable for utilization in work platforms, cranes, and service vehicles. European-wide data communication and global location determination through LTE/GSM and GNSS provide the necessary data quickly, reliably and seamlessly. This keeps you well-informed about your fleet of machines at all times.

Digital inputs can be directly connected even from 48V machines. This maintains flexibility within your machinery fleet. Feel free to ask about the DC/DC converter, a compact component that can be installed quickly .

Even with the power supply turned off, no data is lost thanks to a backup battery. This makes the GTM LITE your perfect gateway into the realm of high-quality machine usage data on our Telematics360 portal.

The GTM LITE offers a cost-effective entry point to various machine data, showcasing its flexible range of applications and easy installation even in harsh environments, thanks to its IP67 protective case.



Fig. 1: GTM LITE for installation in your machines

Features

- Suitable for 48V DC operation
- LTE data transmission with GSM fallback for optimal connectivity
- Accurate GNSS positioning, including lane tracing
- Bluetooth 4.0 LE
- Robust IP 67 protective case designed for rough environments
- 3 digital inputs and outputs
- All information presented in a clear manner on our portal Telematics360
- Data transmission for RentNAV, AFD, Excel®, Google Earth®, XML, and many more

Advantages

- Real-time monitoring of usage durations, operational hours, and sensors
- Built-in battery for machine monitoring
- Compact size with durable design
- Configurable digital and analog I/Os
 - Support for negative inputs possible
- Flexible application range
 - Work platform rental
 - Crane Rental

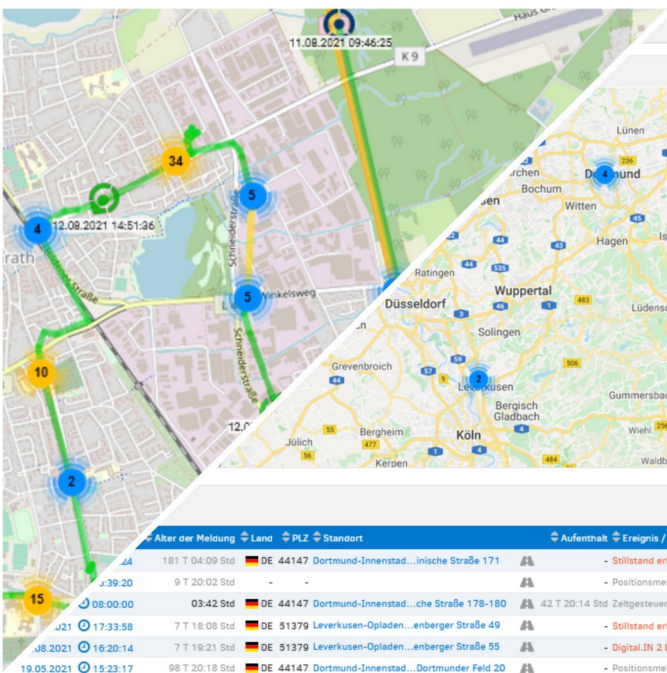




Fig. 2: Lane tracking and overview map in Telematik360

Electrical data	
Supply Voltage	10 - 30 V DC - for 48 V machines with a DC/DC-converter
Current Consumption	Minimal: 12 V < 2.69 mA (Ultra Deep Sleep)
Battery	Integrated Li-Ion battery. Rechargeable via the supply voltage from the on-board power supply
Motion Sensor	Integrated 3-axis accelerometer
Temperature Monitoring	Integrated temperature and humidity sensor
Data transmission	LTE Cat1, GSM
Positioning	GNSS Receiver (GPS, Galileo, GLONASS, BeiDou, QZSS, AGPS)
Antennas	Internal LTE/GSM antenna, internal GNSS antenna
Inputs/Outputs	2 Analog inputs - up to 45 V DC 3 Digital inputs - up to 70 V DC, with a total of 3 inputs available in simultaneously 3 Digital outputs
Interfaces	1 One-Wire, 1 CAN-Adapter, Bluetooth 4.0 LE
Electrical connection	
Device connector	12-pin device plug with coding; 1-meter cable length, cable cross-section 0.5 sqmm
Environmental conditions	
Operating temperature	-40 °C to +85 °C, during battery operation -20 °C to +60 °C
Mechanical data	
Housing	84 x 67 x 27 mm plastic housing
Weight	55 g
IP class	IP67
Certification	
 E-Mark for operation in motor vehicles	
 Declaration of conformity	

Contact Information for COGNID

If you have any questions about our products or services, please don't hesitate to get in touch with us.

Sales

If you need advice or a personalized offer, you can schedule an on-site appointment with our sales team. We are happy to come to you.

vertrieb@cognid.de



Personal contact

If you're looking for a knowledgeable point of contact or the relevant staff member for your specific inquiry within our company, our team is eager to assist you!

+49 231 444704-0

info@cognid.de